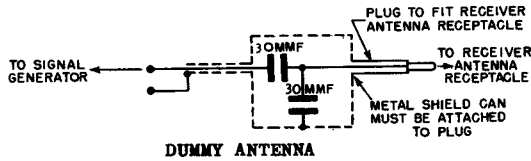
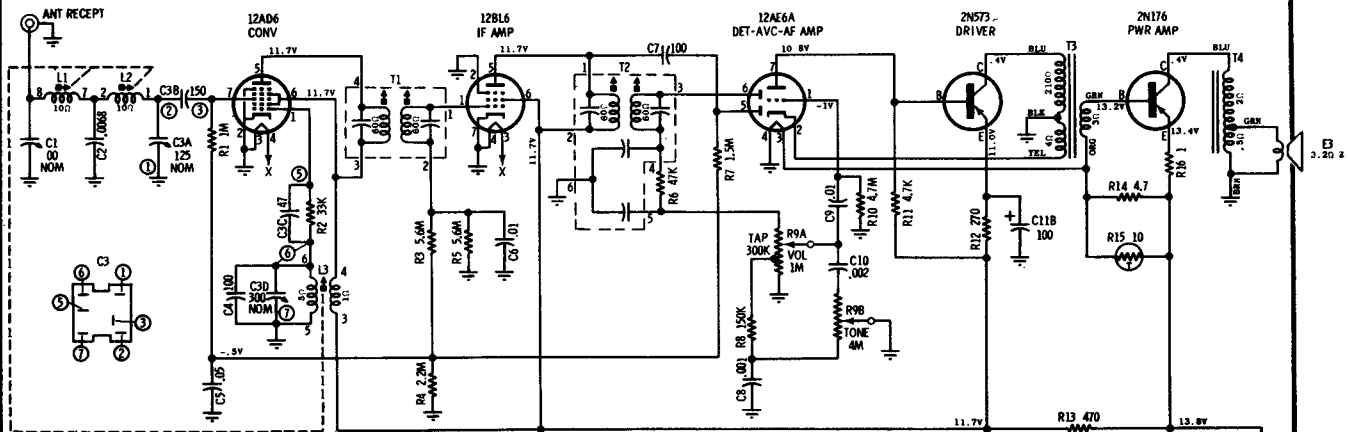
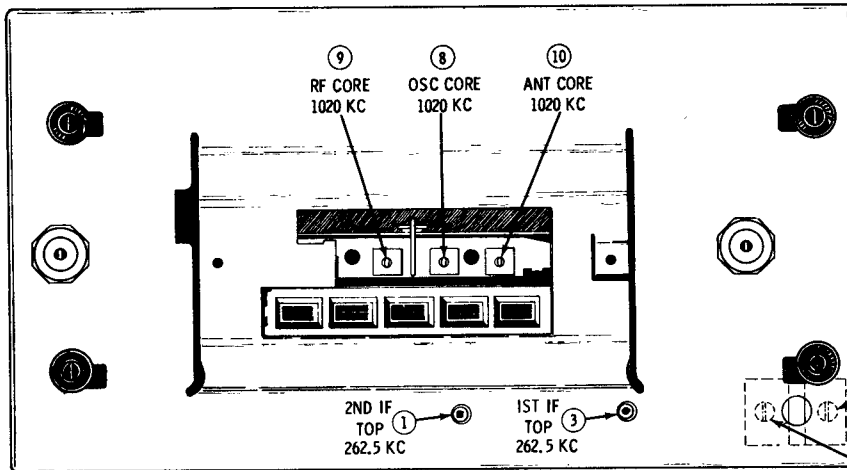
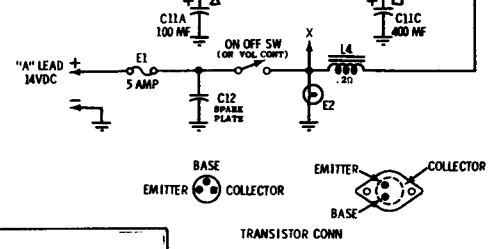
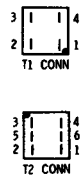


VOLUME R-20, MOST-OFTEN-NEEDED 1960 RADIO SERVICING INFORMATION

MOTOROLA Model 03AR, American Motors # 8990811, for use in 1960 Rambler



DUMMY ANTENNA

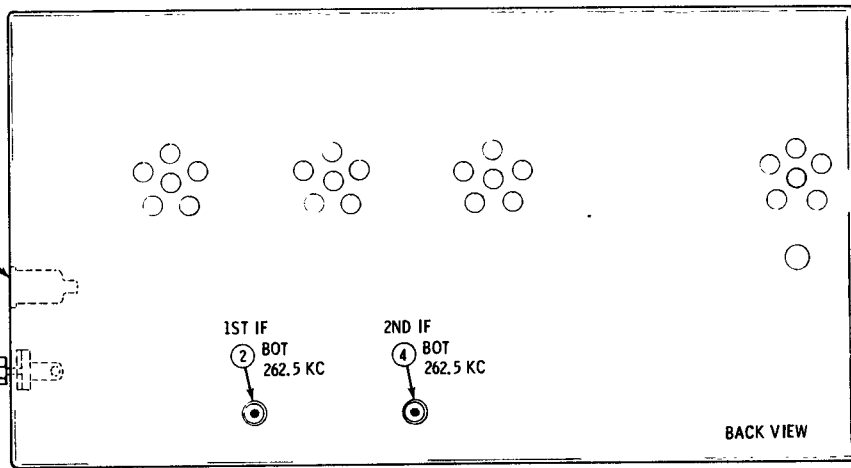


FRONT VIEW (WITH DIAL SCALE AND BACKGROUND REMOVED)

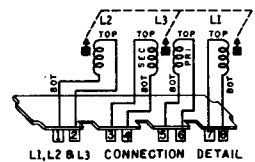
**CAUTION**  
 "A" LEAD MUST BE CONNECTED TO POSITIVE (-) SIDE OF POWER SUPPLY. RADIO WILL NOT OPERATE AND DAMAGE TO COMPONENTS WILL RESULT IF CONNECTED OTHERWISE.

**NOTES:**  
 CAPACITORS - Decimal values in MF. All others in MMF unless otherwise specified.  
 VOLTAGES - Measured from point indicated to chassis,  $\pm 10\%$ . No signal input.  
 INPUT VOLTAGE - 14V DC  
 TUNING RANGE - 540 KC to 1610 KC  
 IF - 262.5 KC

OSC TRIM  
 6 1610 KC  
 RF TRIM  
 5 1610 KC



ALIGNMENT POINTS LOCATION DETAIL



L1, L2 & L3 CONNECTION DETAIL

**MOTOROLA**  
 Model 03AR  
 American Motors  
 # 8990811