

**BYPASS CONDENSERS.** The letters within circles designate the condensers within the multiple units shown on the chassis layout

RF Bypass #1	L	.01 mfd	400 volts	L	.01 mfd	400 volts	# 15790
	C	.1 mfd	400 volts	E	.1 mfd	400 volts	
RF Bypass #2	A	.1 mfd	150 volts	U	.12 mfd	400 volts	# 15770
	B	.1 mfd	150 volts				
RF Bypass #3	D	.1 mfd	400 volts	H	.2 mfd	400 volts	# 15780
	T	.04 mfd	400 volts				
Detector Bypass	F	.1 mfd	400 volts	M	.075 mfd	400 volts	# 15640
	P	.0012 mfd	400 volts	P	.00025 mfd	400 volts	
Tone Control	All condensers are rated at 100 volts						

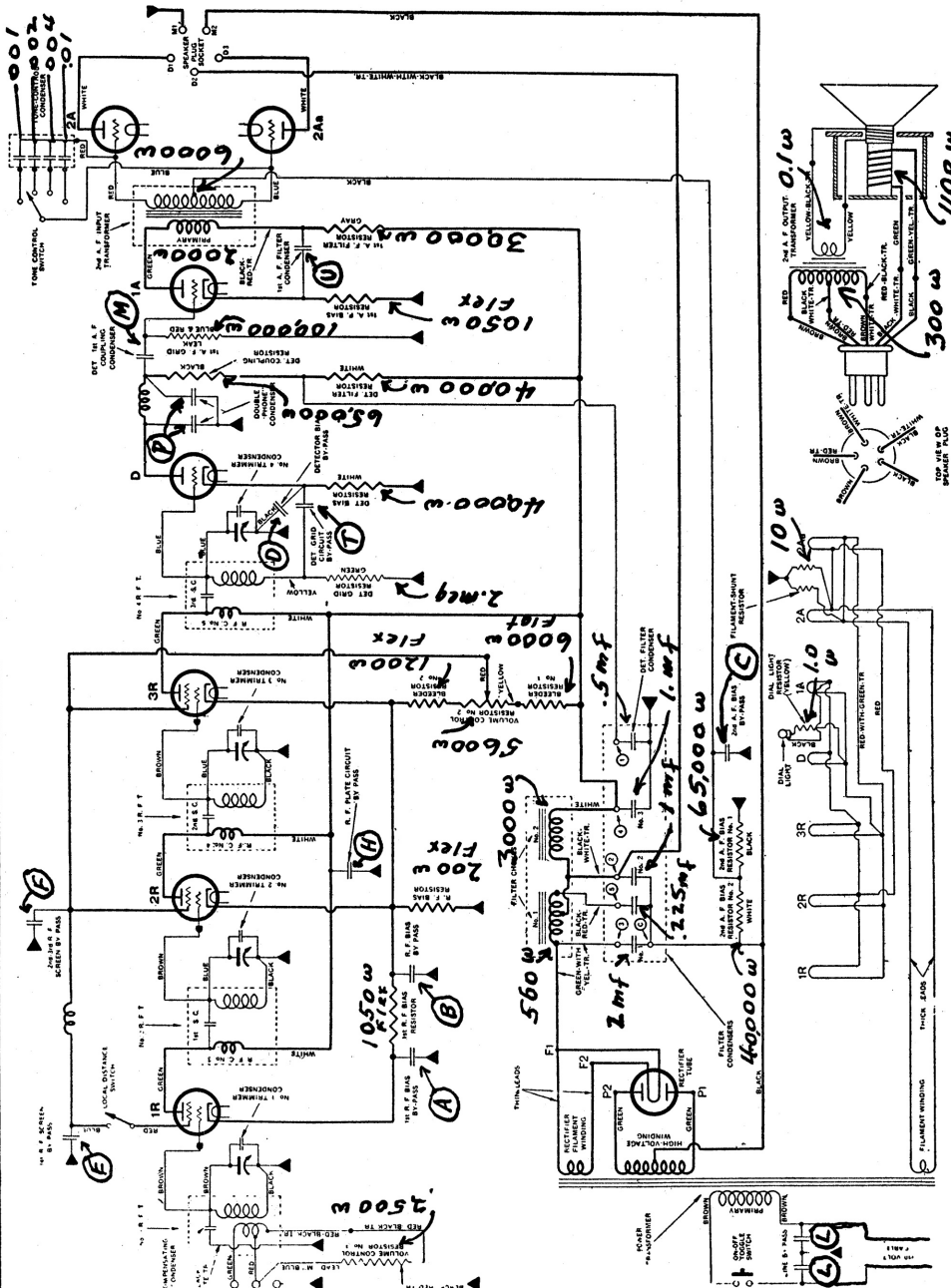


DIAGRAM OF L-2 CHASSIS.

In the majority of L-2 sets, the filament shunt resistor is connected across the R.F. filaments. Also, a 2-ampere fuse is connected in one side of the 110-volt line.

**FILTER CONDENSERS. Numerals in circles designate connections upon filter condenser terminal block.**

- Detector filter .1 mfd connected between terminal (1) and can
- Filter #1 2.0 mfd connected between terminal (2) and center stud
- Filter #2 1.0 mfd connected between terminal (3) and center stud
- Filter #3 1.0 mfd connected between terminal (4) and can
- Resonant condenser .225 mfd connected between terminal (5) and center stud