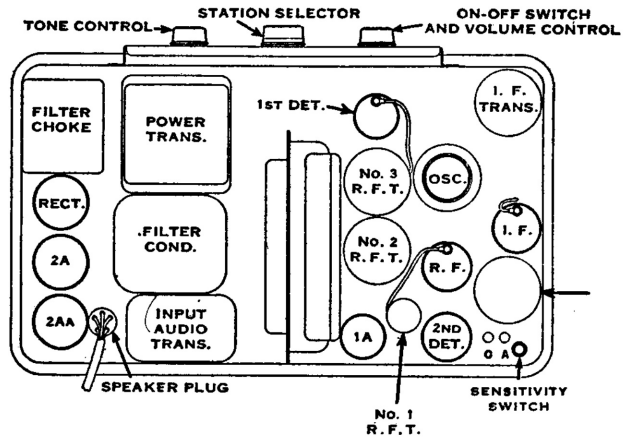


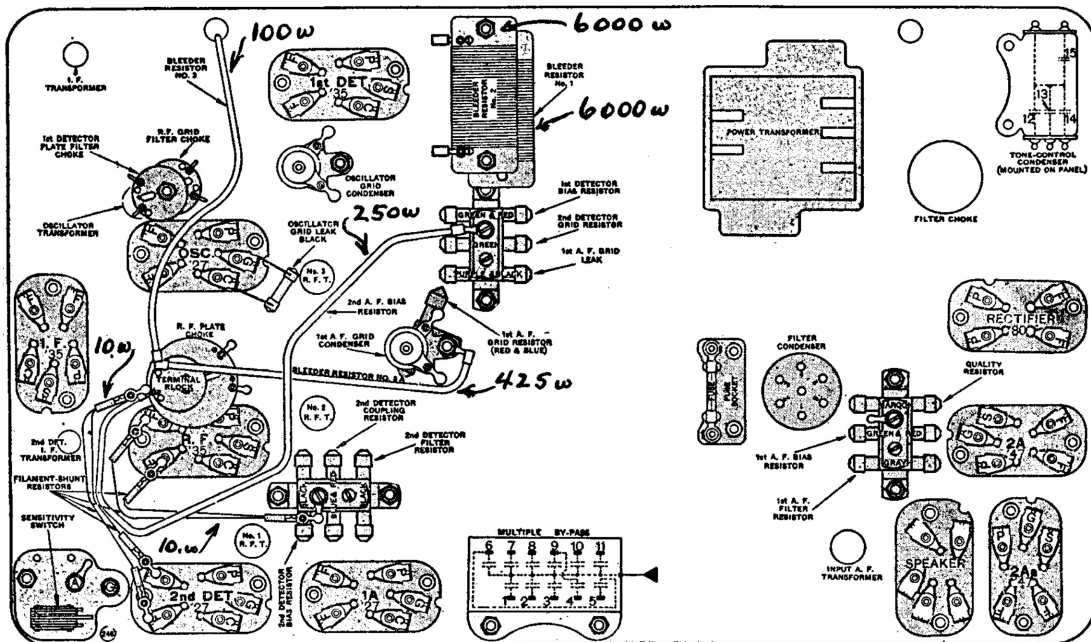
3rd Type  
Above serial  
2,525,871

## By-pass Condensers

- 1—1st-detector plate filter condenser.
- 2—1st-detector bias by-pass.
- 3—R. F.—I. F. bias by-pass.
- 4—2nd-detector grid-circuit by-pass.
- 5—2nd-detector—1st-A. F. coupling condenser.
- 6—Phone condenser.
- 7—R. F. grid filter condenser.
- 8—Quality condenser.
- 9—2nd-detector bias by-pass.
- 10—2nd-detector plate filter condenser.
- 11—Screen by-pass.



TOP VIEW.



**BOTTOM CHART.**

**FILTER CONDENSERS.** The numbers in circles adjacent to the filter condensers correspond with the numbers marked upon the filter condenser terminal block. The following are the connections within the unit.

- Filter #1 2.0 mfd connected between terminals (1) and (4)  
Filter #2 2.3 mfd connected between terminals (2) and (4)  
Filter #3 2.3 mfd connected between terminal (6) and can  
Hum .25 mfd connected between terminals (4) and (5)  
A-F Filter .5 mfd connected between terminal (3) and center stud  
.1 mfd connected between terminal (2) and can (not used)  
.1 mfd connected between center stud and can (not used)